

"Pup Joint"

Description

Pup Joints are used to adjust the height of full length tubing or casing strings. They are also used to adjust the depth of down hole tools.

Application

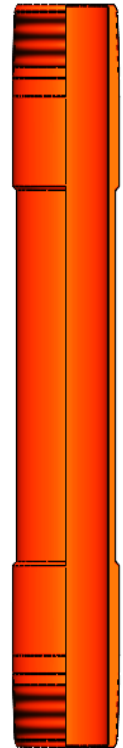
Used as an integral member of tubing string.  
Used to space out the distance between Tubing and Casing components.

Features

Comes with variety of different thread types (API/Proprietary) and Thread size combinations.  
Important to note that upset OD may not be present in some pup joints depending on thread type.  
Complies with API 5CT.

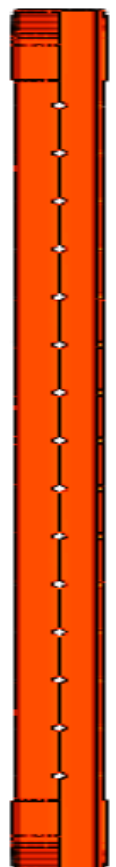
Benefits

Reliable and proven

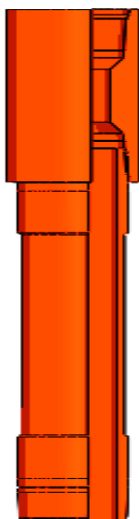


Technical Specification & Sizes.

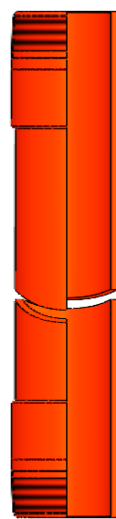
Description	Value
OD (inch)	2-3/8, 2-7/8, 3-1/2, 4, 4-1/2 inch
ID (inch)	2.041 to 3.640 inch
Weight (PPF)	4 to 19.20 ppf
Length (ft)	2, 3, 4,6,8,10,12 FT
Connection type	As per requirement



Different Types of Pup Joint



**Coupled**



**With Extension**

**Perforated**