

"Locators"

Description

Locator is used for the location of various wireline flow control devices in the production string. This locator contain a no-go shoulder used to locate and set the flow control device being run into the well.

The location and number of Top No-Go Seating Locator should be carefully considered in the completion planning stages to allow maximum versatility in the positioning of various flow control devices

Bottom no-go locator is used to land, lock with attached flow control devices in the production tubing string

Application

Single and dual Completions

Features

No Lock Recess & Dependable no-go style
Thread choice available & Complies with API 5CT

Benefits

Maximum reliability and simplicity of locating

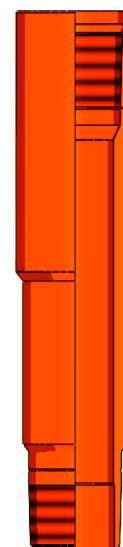
Technical Specification & Sizes

Various sizes, different threading & different materials are available. OD will vary with tubing weight and thread type

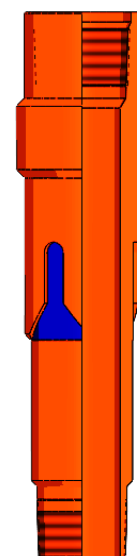
Different Types of Locator

Different types of Locator are available e.g. No-Go Locator, Straight Slot Locator, J-Slot Locator, Latch Locator as per specific applications.

They are available in different seal bore sizes as per below table



Top No Go



Straight Slot

TUBING		Locators
OD (in)	Weight (lbm/ft)	Sealbore (in)
1.9	2.9	1.187,1.250,1.437
2.375	4.7	1.187, 1.250, 1.437, 1.562, 1.625, 1.812, 1.875
2.875	6.5	1.187, 1.437, 1.812, 2.250, 2.312
3.5	9.3	2.250, 2.750, 2.812
4.5	12.8	3.625