

"Flow Couplings"

Description

Flow Couplings are heavy wall connectors used in tubing strings and are designed to minimize the effect of internal erosive action caused by production fluids. Flow couplings are located just above and below of flow control equipments where turbulent flow problems are likely to occur.

Application

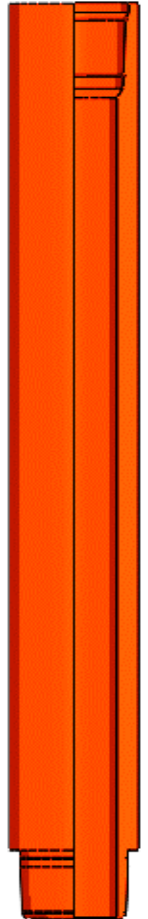
Extends life of production tubing and completion equipment by minimizing effect of internal and external erosion caused by turbulent flow. Installation is above and below the tool which has ID restrictions for flow e.g. small diameter nipple profiles, expansion joints, safety valves, gauges and gas lift mandrels.

Features

Complies with API 5CT.
Manufactured with variety of different thread types (API/Proprietary) and thread Sizes

Benefits

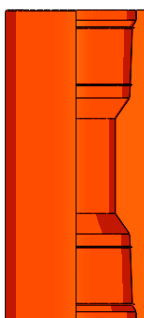
Connection and body performance exceeds or matches with the production tubing.



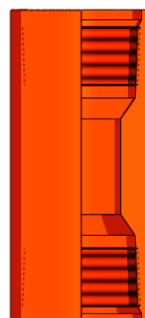
Technical Specification & Sizes

Description	Value
OD	2 3/8" to 4 1/2"
Services	H2S/CO2/Standard/Sour
Material Grades	Available at the customer's request
Length	3' , 6' and 9'
Thread Sizes	Available at the customer's request

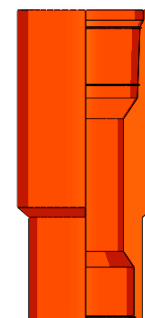
Different Types of Flow Couplings



Box-Box



Combination



Reducing