

*"Entry & Re-Entry Guide"*

**Description**

The "Wireline Entry guide" are used for safe re-entry of wireline tools from the casing into the tubing string. The internal bevel guides the wireline or slick line tool string back into the tubing.

Mule shoe guide is a standard guide for all the of Completion equipments.

**Application**

Safe re-entry of wireline or slickline tools into the tubing string  
 Lowest component in the tubing string.

**Features**

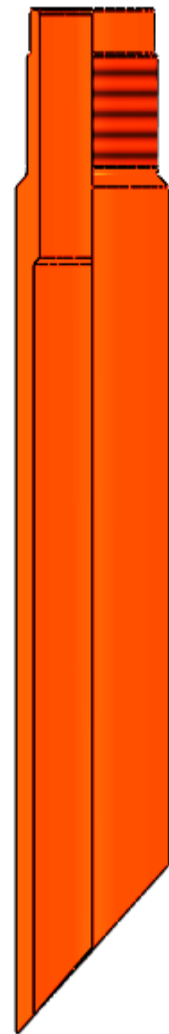
Rugged one piece construction.  
 Available in low alloy steel and premium materials.  
 Available in bevelled, full or half mule shoe configurations.

**Benefits**

Reliable and easy to install

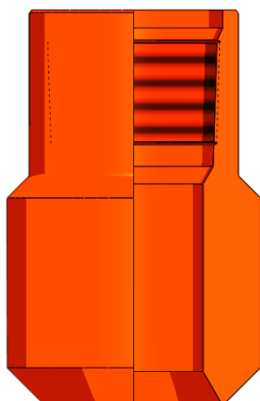
**Technical Specification & Sizes**

Description	Value
Thread Sizes	2 3/8" and onwards
Services	H2S/CO2/Standard/Sour
Material Grades	J-55, N-80, L-80, P-110, 13-CR, 1-CR

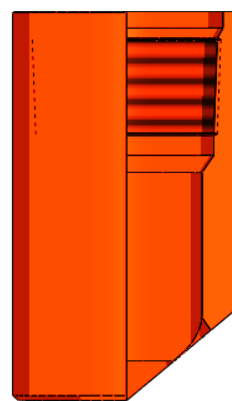


**Mule Shoe**

**Different Types of Guides**



**Wireline Re-entry**



**Half Mule Shoe**