

"Adapter"

Description

Adapter is a short tubular part with typically a 'Box-Pin' thread configuration used to connect two tubular parts with same or different thread types and sizes. This also can be referred to as "cross-over".

Application

Used as an integral member of tubing string.
Used to connect two tubular parts.

Features

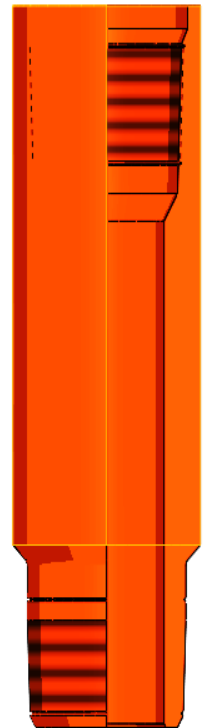
Comes with variety of different thread types (API/Proprietary) and Thread size combinations.
Complies with API 5CT.

Benefits

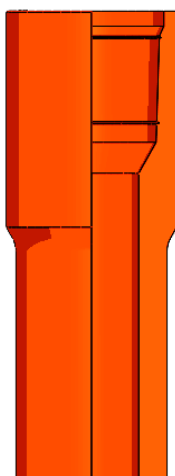
Reliable and easy installation

Technical Specification & Sizes

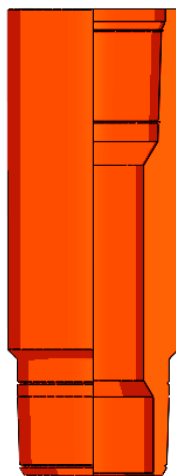
| Description | Value |
|-----------------|--------------------------------------|
| Thread Sizes | 2 3/8" to 7 5/8" |
| Services | H2S/CO2/Standard/Sour |
| Material Grades | J-55, N-80, L-80, P-110, 13-CR, 1-CR |



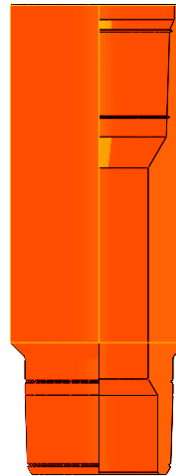
Different Types of Adapter



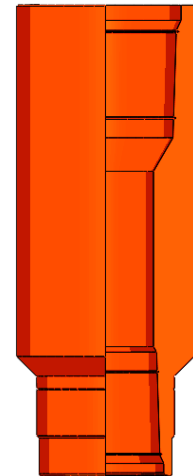
Blank



Combination



Reducing



Three Way